

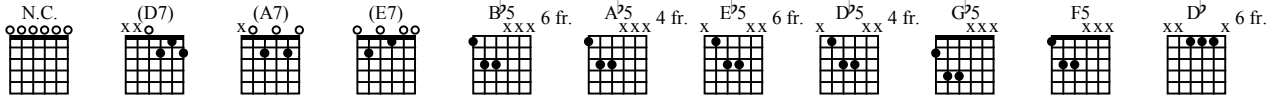
# PARTY ON THE PATIO

As recorded by Z Z Top

(From the 1981 Album EL LOCO)

Transcribed by Tone Jones

Words and Fra...



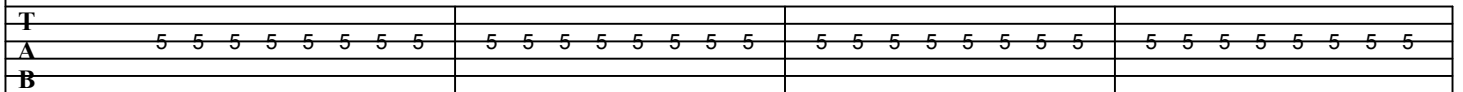
## A Intro

Fast Rock ♩ = 176

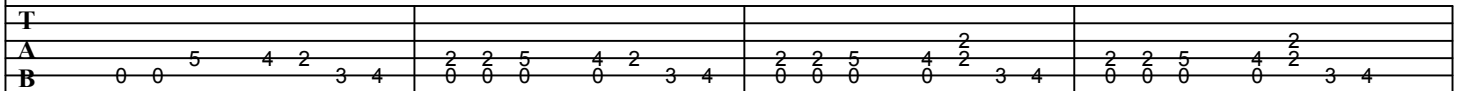
(D7)



Gtr I *mf* Billy Gibbons-Electric Gtr (Clean Tone) Tune Down 1/2 Step Down

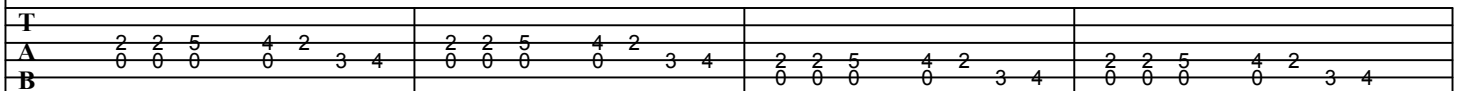


(A7)



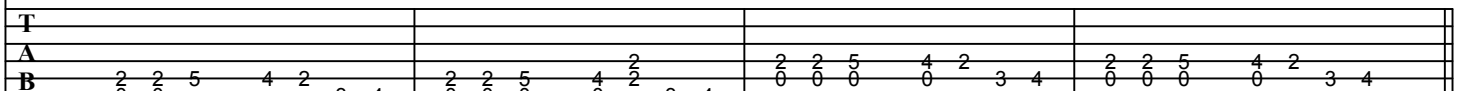
(D7)

(A7)



(E7)

(A7)



**B** Verse

**A7**

17

T  
A  
B

2 2 5 4 2 3 4 | 2 2 5 4 2 3 4 | 2 2 5 4 2 3 4

(D7)

20

T  
A  
B

2 2 5 4 2 3 4 | 2 2 5 5 5 7 | 2 2 5 5 5 7

(A7)

(E7)

23

T  
A  
B

2 2 5 4 2 3 4 | 2 2 5 4 2 3 4 | 2 2 5 4 2 3 4

1. *To Dbl. Coda*

26

T  
A  
B

2 2 5 4 2 3 4 | 2 2 5 4 2 3 4 | 2

2. N.C. N.C.

29

T  
A  
B

5 5 5 5 5 5 5 | 5 5 5 5 5 5 5 | 3 0 1 2 3 0 1 2 | 3 0 1 2 3 0 1 2 3

Billy Gibbons-Electric Gtr (Clean Tone) Tune Down 1/2 Step Down  
Billy Gibbons-Overdriven Gtr Tune Down 1/2 Step Down  
Gtrs I, II

H  
Sl.

C Interlude

Gtr I  $\text{B}^{\flat}7^{\flat}5$

33

Billy Gibbons-Overdriven Gtr Tune Down 1/2 Step Down

Gtr II Full

Gtr I  $A^{\flat}7^{\flat}5$

36

Gtr II Full

1. 2. To Coda

Gtr I  $\text{B}^{\flat}7^{\flat}5$

39

Gtr II Full

**D** Guitar Solo

**Billy Gibbons-Electric Gtr (Clean Tone) Tune Down 1/2 Step Down**

Gtr I <sup>E25</sup>

42

**Billy Gibbons-Overdriven Gtr. Tune Down 1/2 Step Down**

Gtr III

Full

Full

1/2

T 13 11 11 14 13 11 13 11 12 11 11 13 11

A 13 (12) (13) 11 11 13 11

B 13 11

<sup>D25</sup>

45

Hv2l

T 13 11 12 12 13 11 12 10 9 11 9 11 9 10 10 11 9 11 9

A 13 11 12 12 13 11 12 10 9 11 9 11 9 10 10 11 11 11 9

B 13 11 13 11 11 11 11 11 11 11 11 11 11 11 11 11 11 11 11

H

sl.

H

<sup>Gb5</sup>

48

Full

Hv2l

Hv2l

Hv2l

Hv2l

Hv2l

Hv2l

T 11 9 11 9 11 9 9 11 9 11 9 11 9 2 4 2 4 2

A 11 11 11 11 11 11 11 11 11 11 11 11 11 4 4 4 4

B 11 11 11 11 11 11 11 11 11 11 11 11 11 11 11 11 11 11 11

sl.

8va 8va F5 N.C.

51

T 4 2 4 4 2 4

A 4 2 4

B 3 1 2 1 0 4 6

H sl.

Gtr I

D.S.S. al Dbl. Coda

54

T 5 5 5 5 5 5 5 5

A 5 5 5 5 5 5 5 5

B 3 0 1 2 3 0 1 2 3 0 1 2

N.C. N.C. D.S. al Coda

57

T 5 5 5 5 5 5 5 5 5 5 5 5 5 5 5 5

A 5 5 5 5 5 5 5 5 5 5 5 5 5 5 5 5

B 3 0 1 2 3 0 1 2 3 0 1 2 3 0 1 2 3

Gtrs I, II

H sl.

**E** Outro-Guitar Solo

E25 Gtr I Full Hy2l Hy2l Hy2l Hy2l

61

T 14 11 11 11 14 11 13 13 13 13 11 13 11 11 13 11 13

A 14 11 11 11 14 11 13 13 13 13 11 13 11 11 13 11 13

B 14 11 11 11 14 11 13 13 13 13 11 13 11 11 13 11 13

64

D<sup>2</sup>5 D<sup>2</sup> D<sup>2</sup>5

T 11 13 13 11 12 13 13 11 10 9 11 9 11 (11) 9 11 11 11 9 10 11

A

B

H sl. H

67

G<sup>2</sup>5

T 9 11 9 11 9 11 9 11 9 11 11 9 10 10 10 11 11 4 2 4 2 4 2

A

B

Hv2l Hv2l Hv2l Hv2l Hv2l

H

70

F<sup>5</sup>

T 2 4 2 4 2 4 3 1 2 1 1 4 6 5 5 5 5 5 5 5 5

A

B

H sl. Gtr I

73

T 5 5 5 5 5 5 5 5 5 0 1 2 3 0 1 2 3 1

A

B

H