

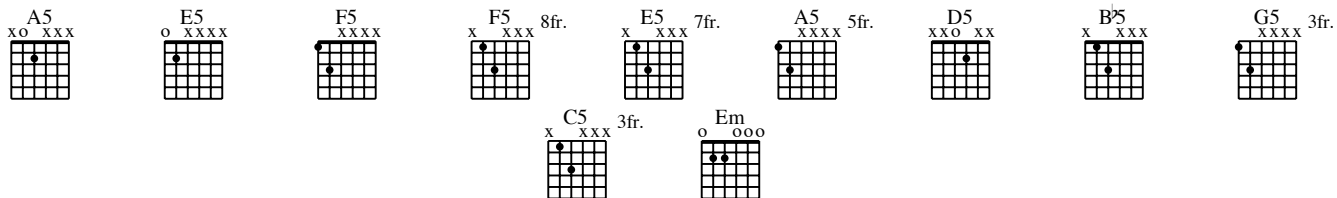
ECLIPSE

As recorded by Yngwie Malmsteen

(from the 1990 Album "Eclipse")

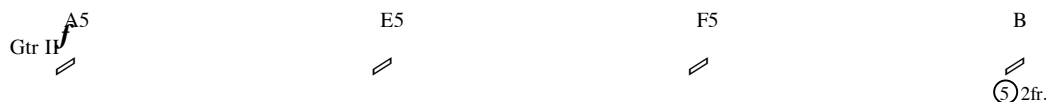
Transcribed by Ivan - (peekaboo104@hotmail.com)

Music by Yngwie J. Malmsteen



A Intro

Vivace ♩ = 140



Gtrs I, V *f*

P.M.

T 12 8 10 12 13 12 8 10 12 8 7 10 7 8 10 12 10 7 8 10 7 8 8 5 6 8 10 8 5 6 8 5 6 7 10 7 8 10 7 10 7 8 10 7 8

A 9 9 9 7 7 7 5 5 5 7 7 7 7

B P P P P P P P P P P P



8var-----|

T 12 8 10 12 13 12 8 10 12 8 7 10 7 8 10 12 10 7 8 10 7 8 8 5 6 8 10 8 5 6 8 5 6 5 17 12 12 14 17 12 12 14 16 12 12 13 12 13

A 9 9 9 7 7 7 5 5 5 7 7 7 7

B P P P P P P P P P P P P P P P

B

8va-1

Am E Dm F Am E B^b E

Musical notation for system 1, measures 9-12. The system includes a vocal line with a treble clef and a '9' at the start, a guitar line with a treble clef and a 'Full' marking, and a guitar II tablature with a treble clef and 'P.M.' markings. The guitar II tablature shows fret numbers (5, 4, 5, 5, 5, 5, 4, 6, 6, 6, 6, 4, 4, 4, 4) and a 'sl.' marking at the end.

Musical notation for system 2, measures 13-16. The system includes a guitar line with a treble clef and a '13' at the start, and a guitar II tablature with a treble clef and 'P.M.' markings. The guitar II tablature shows fret numbers (5, 4, 5, 5, 5, 5, 4, 6, 6, 6, 6, 4, 4, 4, 4) and 'sl.' markings at the end of measures 15 and 16.

C Theme I

17

C#m A B5 C#m

Gtr I *f*

T 9 9 11 9 9 9 11 9 12 9 11 9

A 9 9 11 9 9 9 11 9 12 9 11 9

B

sl.

Gtr II *f*

T 11 8 9 8 9 11 9 8 11 11 9 9 8 11 11

A 11 11 11 12 8 9 11 9 9 8 11 11

B

H

21

C#m A E B5

Gtr I *f*

T 6 9 9 11 9 9 9 11 9 12 12 (12) 9 9 (11) (11)

A 6 9 9 11 9 9 9 11 9 12 12 (12) 9 9 (11) (11)

B

sl.

Gtr II *f*

T 9 11 8 9 11 11 11 11 8 9 11 9 9 11 11 11 11

A 9 11 11 8 6 9 11 11 11 11 8 9 11 9 9 11 11 11

B

H

sl.

25

C#m A5 B5 C#m

sl.

sl. H H P

29

C#m A B5

sl.

Full

H sl.

Double-Time Feel

E

Gtr II A5 8va

41

T 12 16 17 12 13 12 12 12 16 17 12 13 12

A 14 13 15 13 15 12 13 14 12 13 14 13 15 12 13 14 12 14

B

E5 A5 8va

43

T 12 16 13 16 12 16 15 16 16 12 16 17 12 13 12

A 13 12 15 13 12 13 15 12 14 13 15 12 13 15 12 15 13 12 14 13

B

D5 B5 G5 A5

45

T 13 10 10 13 10 10 13 10 6 6 6 10 6 6 4 7 4 5 4 7 4 5 7 8 5 5 5 12 8 12

A

B

P P P P H P P P P

D5 B5 G5 A5

47

T 13 10 10 13 10 10 13 10 6 6 6 10 6 6 4 7 4 5 4 7 4 7 4 5(7) 5

A

B

P P P P H P P sl.

Half-Time Feel

F

G# F E F E D E B E F G# A G# A G# F E

8va-----|

49

f

Full

T	18	12 13 12 18	17	17	17 18 17	17	22	22	22	17 18	16 17 18 17 16
A		14	13	13	13 14 13	19	15	15	15	13 14	12 13 12 13 12 14 13
B						15					

H P H P H P

Gtr IV

mf

1/2 Full

T	9	10	9	9	9	9 10 9	9	12	12	12	9 10	9 10 9 10 9
A	6	8	7	7	12	7 8 7	12	9	9	9	7 8	6 7 6 7 6 10 9
B						10						8 7

H P H P

8va-----| Bm Bm C F E

8va 8va-----|

54

1/2

T	17	17	12	12	12	12	17 18	16 17 16	18	17
A	13	13	14	12	12	12	6 7	12 13 12	14	13
B										

sl. sl. H P

1/2 Full 3 1/2

T	9	7	7	7	7	7	9 10	9 10 9	10	9
A		9	9	9	9	9	9 9 9 0	7 8	6	8 7
B	7									

H P

E F E D E B | E F G# A G# A G# F E

8va-----|-----8va-----|

58

T 17 17 18 17 17 18 17 17 15 15 15 15 15 17 18 16 17 16 17 16 18 17

A 13 13 19 13 19 13 13 15 17 16 16 15 13 14 12 13 12 13 12 14 13

B H P H P sl. H P

61

T 9 9 10 9 12 9 12 2 2 12 12 9 10 9 10 9 10 9 10 9

A 7 8 7 10 7 9 9 9 9 9 9 7 8 6 7 6 7 6 8 7

B 0 H P H P

G Double-Time Feel

A5

Gtr II

8va-----|-----8va-----|

62

T 17 17 12 12 12 12 12 12 13 12 16 17 12 13 12 12 13 15 12 13 12 13 12 12

A 13 13 14 12 12 12 12 12 14 14 13 12 16 17 12 13 15 13 15 12 13 14 13

B sl. sl. sl.

65

T 9 9 7 7 7 7 21 21

A 7 7 9 9 9 9 9 9

B 7 sl. 1 1/2

E5

66

T 14 13 12 16 17 12 13 15 12 13 15 12 13 14 14 13 12 16 13 16 12 16 15 16 13 16 12 13 15 12

A

B

A5 D5 B⁵

68

T 14 13 12 16 17 12 13 15 12 15 13 12 14 13 13 10 10 13 10 10 13 10 6 6 6 10 6 6 6

A

B

P P P P

G5 A5 D5 B⁵ C5 A5 Em/G#

70

T 4 7 4 5 4 7 4 5 7 8 5 5 12 8 10 13 10 10 13 10 13 10 6 6 10 6 6 6 4 7 4 5 4 7 4 7 4

A

B

H P P P P P P P H P P

H Breakdown

Tempo II ♩ = 164

E F# E F# E F# E F# E C# E F# E F# E F# E F# B^b B C# F#

74

T 4 2 4 2 4 2 4 4 2 4 2 6 6 4 2 4 4 2 4 2 4 2 4 4 2 4 4

A

B 2 0 2 0 2 0 2 2 0 2 0 4 4 4 0 2 2 0 2 0 2 0 2 2 1 2 4 2

E F# E F# E F# E F# E C# E F# E F# E G F# E F# Bb B C# A
8va---1

78

(A Phrygian Dominant) Gtrs I, IV

T							15 17
A	4 2 4 2 4	2 4	4 2 4 2	6 6 6	2 4	4 2 4 2 5 4 2 4	4
B	2 0 2 0 2	0 2	2 0 2 0	4 4 4	0 2	2 0 2 0 3 2 0 2	2 1 2 4

sl.

I Guitar Solo I

N.C. (G)
8va-----1

82

T	17	(15)	15	15 16 15 16 15 16 15 16 15 16 15	17	17 17 15 17 15 17 15 17 15 17 15 17	17	17 17 15 17 15 17 15 17 15 17 15 17	17			
A										15 14 15 14 15 15 14 15	15 14 15	15
B												

sl. P P P P P P *sl.* P P H P H H

Gtr IV

T												
A												
B	5 3 5 3 6	5 3 5	5 3 5	5 3 5	8 7 5	5	5 3 5 3 6	5 3 5	4	5	7	5

86

T	14	14	14 12 14 12	12 12	14	14 15 14 15	14 15 17	15	17 15 14	15 14 15	14 15	15 14
A												
B												

H P H H H P H H

(C# Phrygian Dominant)

T												
A												
B	5 3 5 3 6	5 3 5	5 3 5	8 7 5	5	5 3 2 3 6	5 3 5	4	5	7	4	

K Guitar Solo III

N.C. (E)

8va-----|

96

T 13 15 13 14 16 13 14 16 17 14 16 17 19 14 17 19 19 9 19 14 14 14 15 12 15 16 15 14 14 15 14 12 14 12 15 14 14 12 11 14

A

B

sl. H H P P P P

T

A

B 4 2 4 2 0 4 2 4 1 2 4 2 2 0 2 0 3 2 0 2 2 0 2 0 5 4 2 2

100

T 12 11 12 11 14 12 14 14 14 14 0 2 1 2 1 2 1 2 1 2 1 9 11 12 11 9 12 9 11 12 11 9 12 9 11 12 11 9 12 9 11 12

A

B

P sl. P P P

T

A

B 2 0 2 0 3 2 0 2 1 2 4 2 2 0 2 0 3 2 0 2 2 0 2 0 5 4 2 2

rit.

104

Full $1\frac{1}{2}$

sl. sl. sl.

T
A
B

T
A
B

p

L* Finale *with echo and bass octaver*

Andante $\text{♩} = 82$

E5 *Gtr II* \curvearrowright *8vr* \curvearrowleft Em *Gtr VI* \curvearrowright \curvearrowleft

108

sl. *H P*

T
A
B

T
A
B

N.C.

8vr \curvearrowright \curvearrowleft

112

**Octave divider doubles melody an octave below with 10 ph. echo, set for one repeat.*

sl. *H P*

T
A
B

T
A
B

p *p* *p* *p* *p* *V.* *VP* *V V* *V V* *sl.* *P P sl.* *P P P sl.*